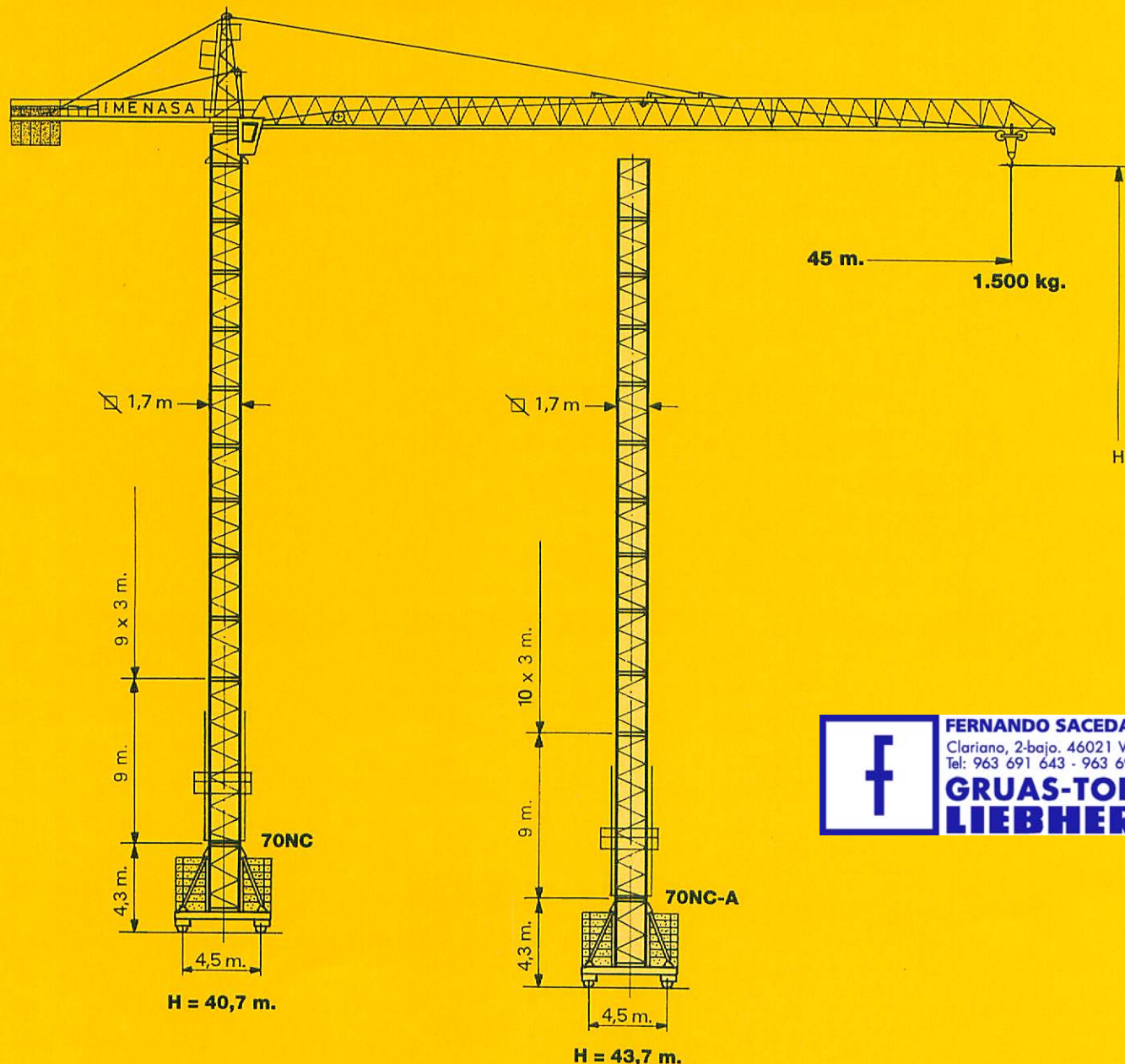




**Grua torre
Tower Crane
Grue à tour**

70 NC



Altura bajo gancho/Hoisting height/Hauteur sous crochet

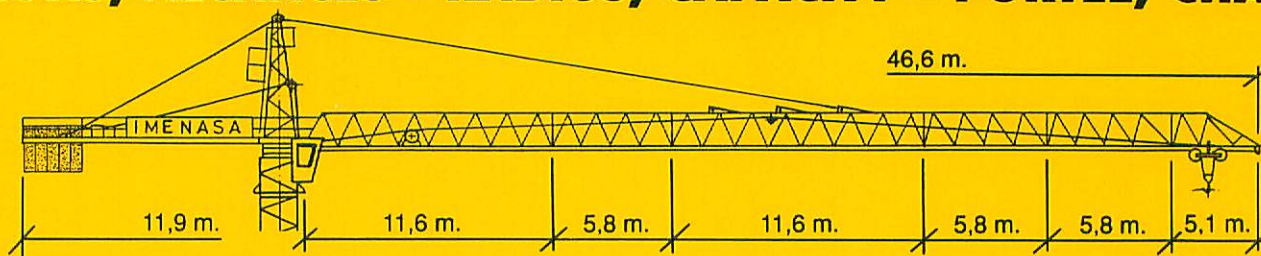
<div>versión</div> <div>versions</div> <div>version</div>	<div><div>I móvil</div><div>via recta mobile</div><div>mobile</div></div> <div></div>	<div><div>II fija</div><div>stationary on</div><div>undercarriage</div><div>stationnaire</div><div>sur châssis</div></div> <div></div>	<div><div>III estacionaria</div><div>stationary</div><div>stationnaire</div></div> <div></div>	<div><div>IV base cruciforme</div><div>cruciform base</div></div> <div></div>																																																																																								
<div>Nº de Tramos N</div> <div>number of tower sections N</div> <div>Nº. des éléments de mât N</div>	<table><tr><th>N</th><th>m</th></tr><tr><td>0</td><td>13,7</td></tr><tr><td>1</td><td>16,7</td></tr><tr><td>2</td><td>19,7</td></tr><tr><td>3</td><td>22,7</td></tr><tr><td>4</td><td>25,7</td></tr><tr><td>5</td><td>28,7</td></tr><tr><td>6</td><td>31,7</td></tr><tr><td>7</td><td>34,7</td></tr><tr><td>8</td><td>37,7</td></tr><tr><td>*9</td><td>40,7</td></tr></table>	N	m	0	13,7	1	16,7	2	19,7	3	22,7	4	25,7	5	28,7	6	31,7	7	34,7	8	37,7	*9	40,7	<table><tr><th>N</th><th>m</th></tr><tr><td>0</td><td>13,5</td></tr><tr><td>1</td><td>16,5</td></tr><tr><td>2</td><td>19,5</td></tr><tr><td>3</td><td>22,5</td></tr><tr><td>4</td><td>25,5</td></tr><tr><td>5</td><td>28,5</td></tr><tr><td>6</td><td>31,5</td></tr><tr><td>7</td><td>34,5</td></tr><tr><td>8</td><td>37,5</td></tr><tr><td>*9</td><td>40,5</td></tr></table>	N	m	0	13,5	1	16,5	2	19,5	3	22,5	4	25,5	5	28,5	6	31,5	7	34,5	8	37,5	*9	40,5	<table><tr><th>N</th><th>m</th></tr><tr><td>0</td><td>9,4</td></tr><tr><td>1</td><td>12,4</td></tr><tr><td>2</td><td>15,4</td></tr><tr><td>3</td><td>18,4</td></tr><tr><td>4</td><td>21,4</td></tr><tr><td>5</td><td>24,4</td></tr><tr><td>6</td><td>27,4</td></tr><tr><td>7</td><td>30,4</td></tr><tr><td>8</td><td>33,4</td></tr><tr><td>*9</td><td>36,4</td></tr></table>	N	m	0	9,4	1	12,4	2	15,4	3	18,4	4	21,4	5	24,4	6	27,4	7	30,4	8	33,4	*9	36,4	<table><tr><th>N</th><th>m</th></tr><tr><td>0</td><td>10,0</td></tr><tr><td>1</td><td>13,0</td></tr><tr><td>2</td><td>16,0</td></tr><tr><td>3</td><td>19,0</td></tr><tr><td>4</td><td>22,0</td></tr><tr><td>5</td><td>25,0</td></tr><tr><td>6</td><td>28,0</td></tr><tr><td>7</td><td>31,0</td></tr><tr><td>8</td><td>34,0</td></tr><tr><td>*9</td><td>37,0</td></tr></table>	N	m	0	10,0	1	13,0	2	16,0	3	19,0	4	22,0	5	25,0	6	28,0	7	31,0	8	34,0	*9	37,0
N	m																																																																																											
0	13,7																																																																																											
1	16,7																																																																																											
2	19,7																																																																																											
3	22,7																																																																																											
4	25,7																																																																																											
5	28,7																																																																																											
6	31,7																																																																																											
7	34,7																																																																																											
8	37,7																																																																																											
*9	40,7																																																																																											
N	m																																																																																											
0	13,5																																																																																											
1	16,5																																																																																											
2	19,5																																																																																											
3	22,5																																																																																											
4	25,5																																																																																											
5	28,5																																																																																											
6	31,5																																																																																											
7	34,5																																																																																											
8	37,5																																																																																											
*9	40,5																																																																																											
N	m																																																																																											
0	9,4																																																																																											
1	12,4																																																																																											
2	15,4																																																																																											
3	18,4																																																																																											
4	21,4																																																																																											
5	24,4																																																																																											
6	27,4																																																																																											
7	30,4																																																																																											
8	33,4																																																																																											
*9	36,4																																																																																											
N	m																																																																																											
0	10,0																																																																																											
1	13,0																																																																																											
2	16,0																																																																																											
3	19,0																																																																																											
4	22,0																																																																																											
5	25,0																																																																																											
6	28,0																																																																																											
7	31,0																																																																																											
8	34,0																																																																																											
*9	37,0																																																																																											
<div>Altura bajo Gancho (H) m</div> <div>hoisting height m</div> <div>hauteur sous crochet m</div>																																																																																												

* Bajar torre de montaje/Lower guide section after erection/Baissez la cage télescopique après le montage.

IMENASA

Grupo Liebherr

CARGAS, ALCANCES - RADIUS, CAPACITY - PORTEE, CHARGE



45 m.	2,3 / 24,7	27	30	33	36	39	42	45	m			
3,00	2,71	2,40	2,16	1,95	1,77	1,63	1,50	t				
2,4 / 12,8	15	18	21	24	27	30	33	36	39	42	45	m
6,00	5,02	4,07	3,40	2,92	2,54	2,24	2,10	1,80	1,62	1,48	1,35	t
39,2 m.	2,3 / 27,4	30	33	36	39,2	m						
3,00	2,71	2,43	2,20	2,00	t							
2,4 / 14,2	18	21	24	27	30	33	36	39,2	m			
6,00	4,60	3,87	3,31	2,89	2,55	2,28	2,05	1,85	t			
33,4 m.	2,3 / 28,4	30	33,4	m								
3,00	2,82	2,50	t									
2,4 / 14,8	18	21	24	27	30	33,4	m					
6,00	4,80	4,03	3,46	3,02	2,67	2,35	t					
27,6 m.	2,3 / 27,6	m										
3,00	t											
2,4 / 15,2	18	21	24	27,6	m							
6,00	4,97	4,17	3,58	3,05	t							

ESPECIFICACIONES - SPECIFICATIONS - SPECIFICATIONS

Mecanismos Mechanisms Mécanismes	Nº Ramales Falls Brins	m / min.	Kg.	CV
ELEVACION HOISTING LEVAGE		9	3.000	25
		30	3.000	
		60	1.500	
GIRO SLEWING ORIENTATION		4,5	6.000	25
		15	6.000	
		30	3.000	
GIRO SLEWING ORIENTATION		0,80 r.p.m.		2 x 4
CARRO TROLLEYING CHARIOT		14 / 56		1,7 / 4
TRASLACION TRAVELLING TRANSLATION		20		7,5

• OPCIONAL
OPTIONAL
OPTIONNEL

PESO DE CONSTRUCCION DEAD WEIGHT POIDS DE CONSTRUCTION	LASTRE DE BASE CENTRAL BALLAST LEST DE BASE	CONTRAPESO CONTRAPLUMA COUNTERWEIGHT BALLAST CONTREPOIDS CONTRE-FLECHE	REACCIONES REACTIONS REACTIONS
70 NC 35.000 Kgs. 70 NC A 36.000 Kgs.	58.200 Kgs. 73.700 Kgs.	10.000 Kgs.	71.800 Kgs. 82.900 Kgs.

TENSION 380 V - 50 Hz	• OPCIONAL-OPTIONAL-OPTIONNEL	OTRAS SOLUCIONES CONSULTAR OTHER SPECIFICATIONS ON REQUEST AUTRES SOLUTIONS NOUS CONSULTER
POTENCIAL TOTAL INSTALADA 44,5 CV TOTAL MOTOR OUTPUT PUISSANCE TOTALE INSTALLEE		

IMENASA GRUAS, S.A.

Carretera Guipúzcoa, s/n - Apartado 140
Tel. (948) 129799 - Telex 37898 INNA E
Fax (948) 127356 - 31013 PAMPLONA



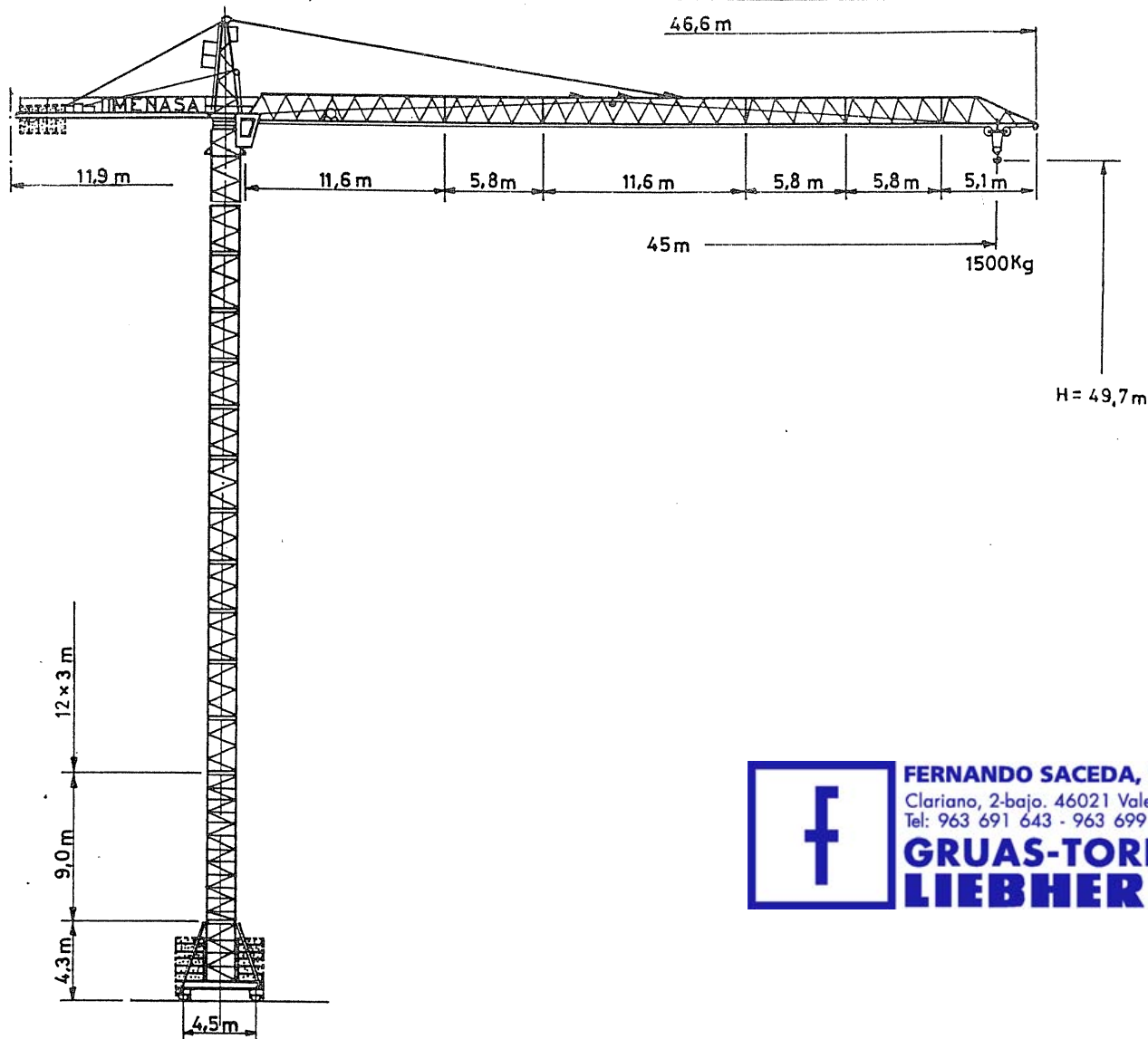
FERNANDO SACEDA, S.A.
Clariano, 2-bajo. 46021 Valencia
Tel: 963 691 643 - 963 699 348
**GRUAS-TORRE
LIEBHERR**

Junio 1.991

Conforme a Instrucción Técnica Complementaria MIE-AEM2 - (B.O.E. 7-7-1988)
MODIFICACIONES RESERVADAS - SUBJECT TO MODIFICATION - MODIFICATIONS RESERVES

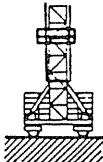
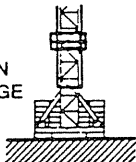
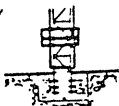
GRUA TORRE TOWER CRANE

70NC/R



FERNANDO SACEDA, S.A.
 Clariano, 2-bajo. 46021 Valencia
 Tel: 963 691 643 - 963 699 348
**GRUAS-TORRE
LIEBHERR**

Altura bajo gancho - Hoisting height

<div><div>VERSION</div><div>VERSIONS</div></div>	<div><div>I MOVIL</div><div>VIA RECTA MOBILE</div><div></div></div>	<div><div>II FIJA</div><div>STATIONARY ON UNDERCARRIAGE</div><div></div></div>	<div><div>III ESTACIONARIA</div><div>STATIONARY</div><div></div></div>																																																																																				
<div><div>Nº de Tramos N</div><div>NUMBER OF TOWER SECTIONS N</div></div>	<table><tr><td>N</td><td>m</td></tr><tr><td>0</td><td>13,7</td></tr><tr><td>1</td><td>16,7</td></tr><tr><td>2</td><td>19,7</td></tr><tr><td>3</td><td>22,7</td></tr><tr><td>4</td><td>25,7</td></tr><tr><td>5</td><td>28,7</td></tr><tr><td>6</td><td>31,7</td></tr><tr><td>7</td><td>34,7</td></tr><tr><td>8</td><td>37,7</td></tr><tr><td>* 9</td><td>40,7</td></tr><tr><td>±10</td><td>43,7</td></tr><tr><td>±11</td><td>46,7</td></tr><tr><td>±12</td><td>49,7</td></tr></table>	N	m	0	13,7	1	16,7	2	19,7	3	22,7	4	25,7	5	28,7	6	31,7	7	34,7	8	37,7	* 9	40,7	±10	43,7	±11	46,7	±12	49,7	<table><tr><td>N</td><td>m</td></tr><tr><td>0</td><td>13,5</td></tr><tr><td>1</td><td>16,5</td></tr><tr><td>2</td><td>19,5</td></tr><tr><td>3</td><td>22,5</td></tr><tr><td>4</td><td>25,5</td></tr><tr><td>5</td><td>28,5</td></tr><tr><td>6</td><td>31,5</td></tr><tr><td>7</td><td>34,5</td></tr><tr><td>8</td><td>37,5</td></tr><tr><td>* 9</td><td>40,5</td></tr><tr><td>±10</td><td>43,5</td></tr><tr><td>±11</td><td>46,5</td></tr><tr><td>±12</td><td>49,5</td></tr></table>	N	m	0	13,5	1	16,5	2	19,5	3	22,5	4	25,5	5	28,5	6	31,5	7	34,5	8	37,5	* 9	40,5	±10	43,5	±11	46,5	±12	49,5	<table><tr><td>N</td><td>m</td></tr><tr><td>0</td><td>9,4</td></tr><tr><td>1</td><td>12,4</td></tr><tr><td>2</td><td>15,4</td></tr><tr><td>3</td><td>18,4</td></tr><tr><td>4</td><td>21,4</td></tr><tr><td>5</td><td>24,4</td></tr><tr><td>6</td><td>27,4</td></tr><tr><td>7</td><td>30,4</td></tr><tr><td>8</td><td>33,4</td></tr><tr><td>* 9</td><td>36,4</td></tr><tr><td>±10</td><td>39,4</td></tr><tr><td>±11</td><td>42,4</td></tr><tr><td>±12</td><td>45,4</td></tr></table>	N	m	0	9,4	1	12,4	2	15,4	3	18,4	4	21,4	5	24,4	6	27,4	7	30,4	8	33,4	* 9	36,4	±10	39,4	±11	42,4	±12	45,4
N	m																																																																																						
0	13,7																																																																																						
1	16,7																																																																																						
2	19,7																																																																																						
3	22,7																																																																																						
4	25,7																																																																																						
5	28,7																																																																																						
6	31,7																																																																																						
7	34,7																																																																																						
8	37,7																																																																																						
* 9	40,7																																																																																						
±10	43,7																																																																																						
±11	46,7																																																																																						
±12	49,7																																																																																						
N	m																																																																																						
0	13,5																																																																																						
1	16,5																																																																																						
2	19,5																																																																																						
3	22,5																																																																																						
4	25,5																																																																																						
5	28,5																																																																																						
6	31,5																																																																																						
7	34,5																																																																																						
8	37,5																																																																																						
* 9	40,5																																																																																						
±10	43,5																																																																																						
±11	46,5																																																																																						
±12	49,5																																																																																						
N	m																																																																																						
0	9,4																																																																																						
1	12,4																																																																																						
2	15,4																																																																																						
3	18,4																																																																																						
4	21,4																																																																																						
5	24,4																																																																																						
6	27,4																																																																																						
7	30,4																																																																																						
8	33,4																																																																																						
* 9	36,4																																																																																						
±10	39,4																																																																																						
±11	42,4																																																																																						
±12	45,4																																																																																						
<div><div>Altura bajo Gancho m</div><div>HOISTING HEIGHT m</div></div>																																																																																							

* Bajar torre de montaje

IMENASA

CARGAS Y ALCANCES RADIUS AND CAPACITY

♀	45 m.	2,3 / 24,7										27	30	33	36	39	42	45 m
		3,00										2,71	2,40	2,16	1,95	1,77	1,63	1,50 t
♀ / ♀	2,4 / 12,8	15	18	21	24	27	30	33	36	39	42	45 m						
	6,00	5,02	4,07	3,40	2,92	2,54	2,24	2,10	1,80	1,62	1,48	1,35 t						
♀	39,2 m.	2,3 / 27,4										30	33	36	39,2 m			
		3,00										2,71	2,43	2,20	2,00 t			
♀ / ♀	2,4 / 14,3	18	21	24	27	30	33	36	39,2 m									
	6,00	4,60	3,87	3,31	2,89	2,55	2,28	2,05	1,85 t									
♀	33,4 m.	2,3 / 28,4										30	33,4 m					
		3,00										2,82	2,50 t					
♀ / ♀	2,4 / 14,8	18	21	24	27	30	33,4 m											
	6,00	4,80	4,03	3,46	3,02	2,67	2,35 t											
♀	27,6 m.	2,3 / 27,6										m						
		3,00										t						
♀ / ♀	2,4 / 15,2	18	21	24	27,6 m													
	6,00	4,97	4,17	3,58	3,05 t													

CARACTERISTICAS GENERALES - TECHNICAL DATA Mecanismos - Mechanisms

Mecanismos Mechanisms		Nº Ramales Falls	m / min.	Kg.	CV
ELEVACION HOIST GEAR			7 40 81	3.000 3.000 1.500	32
			3,5 20,0 40,5	6.000 6.000 3.000	32
GIRO SLEWING GEAR				0,8 r.p.m. s.l.m.	2 x 4
CARRO TROLLEY IN GEAR				14 / 56	1,7 / 4
TRASLACION TRAVELLING GEAR				22	10

ESPECIFICACIONES - SPECIFICATIONS

PESO DE CONSTRUCCION DEAD WEIGHT	LASTRE DE BASE CENTRAL BALLAST	CONTRAPESO CONTRAPLUMA COUNTERWEIGHT BALLAST	CARGA MAXIMA POR ESQUINA MAX. CORNER PRESSURE
38.000 Kgs	93.000 Kgs	10.000 Kgs.	105.800 Kgs
TENSION 380 V - 50 Hz		OTRAS SOLUCIONES CONSULTAR OTHER SPECIFICATIONS ON REQUEST	
POTENCIA TOTAL INSTALADA TOTAL MOTOR OUTPUT	52 CV		

IMENASA GRUAS, S.A.

C/ Era Guipúzcoa, s/n - Apartado 140
Tel. (948) 129799 - Telex 37898 INNA E
Fax (948) 127356 - 31013 PAMPLONA



FERNANDO SACEDA, S.A.
Clariano, 2-bajo. 46021 Valencia
Tel: 963 691 643 - 963 699 348
**GRUAS-TORRE
LIEBHERR**

Conforme a Instrucción Técnica Complementaria MIE-AEM2 - (B.O.E. 7-7-1988)
MODIFICACIONES RESERVADAS - SUBJECT TO MODIFICATION