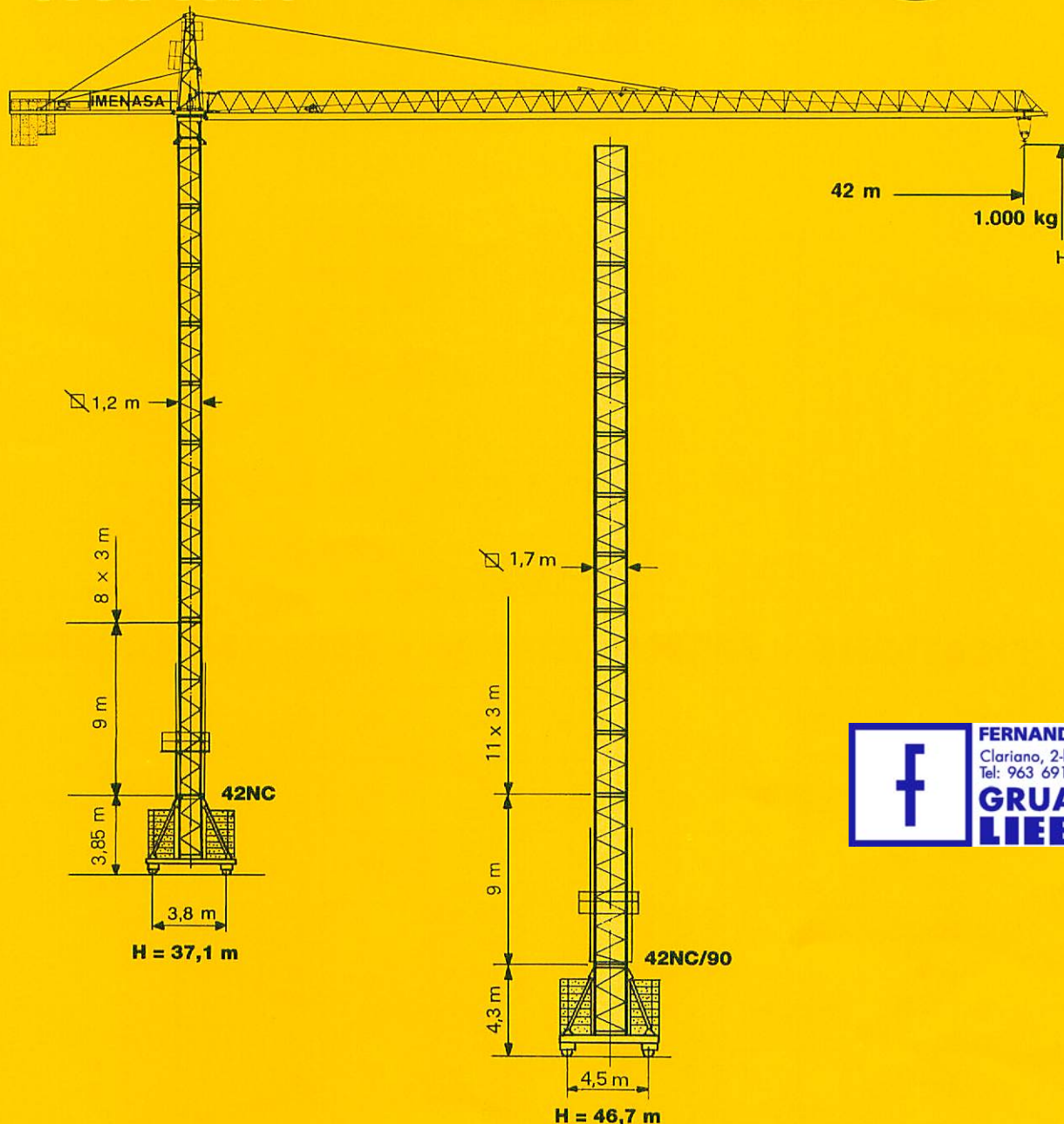


Tower Crane
Grue à tour
Grúa torre

42 NC



FERNANDO SACEDA, S.A.
Clariano, 2-bajo. 46021 Valencia
Tel: 963 691 643 - 963 699 348
GRUAS-TORRE
LIEBHERR

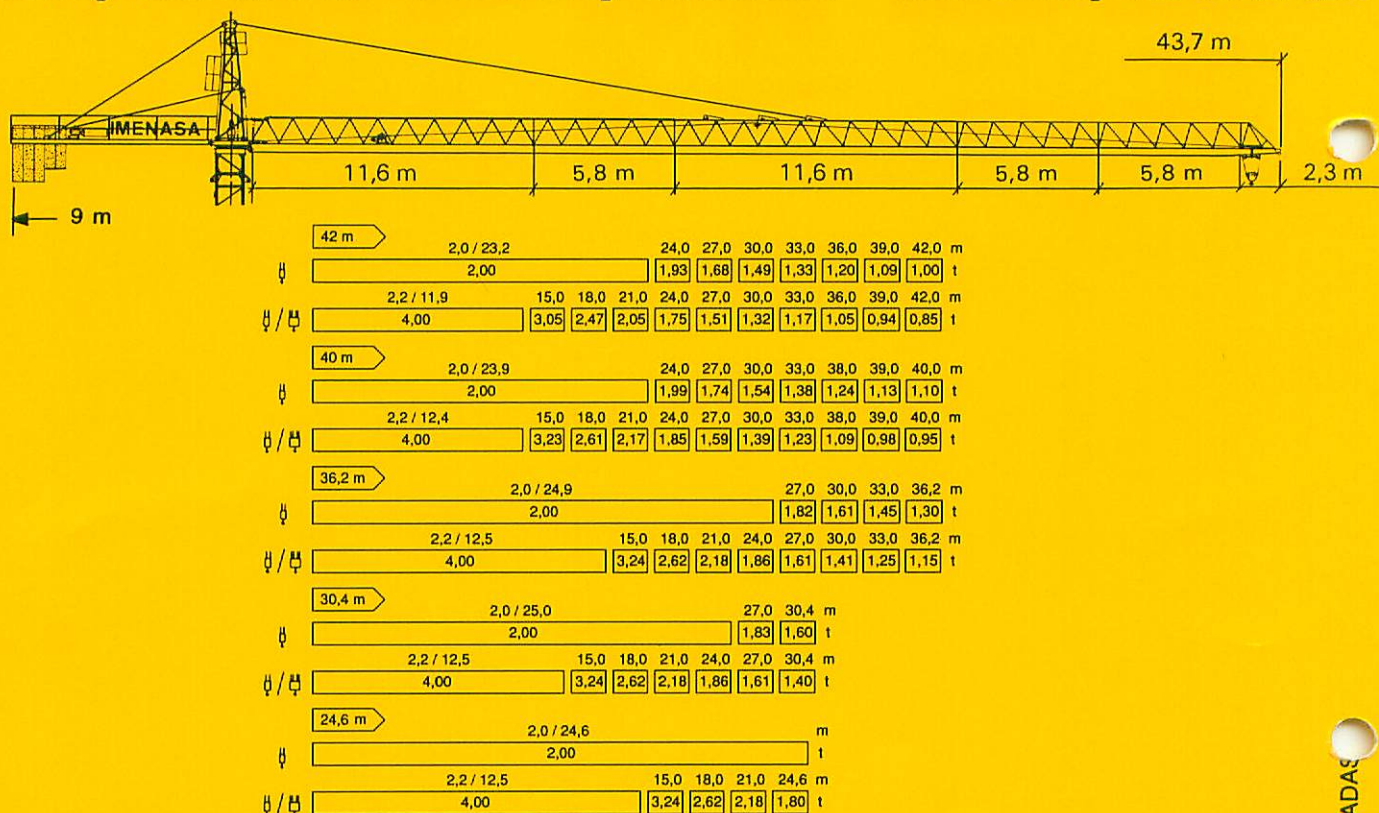
Hoisting height/Hauteur sous crochet/Altura bajo gancho

versions version versión	I mobile mobile móvil	II stationary on undercarriage stationnaire sur châssis fija	III stationary stationnaire estacionaria	IV cruciform base cruciform base base cruciforme
Number of tower sections N Nº. des éléments de mât N Nº de tramos N	N m	N m	N m	N m
	0 13,1	0 13,0	0 9,4	0 9,9
	1 16,1	1 16,0	1 12,4	1 12,9
	2 19,1	2 19,0	2 15,4	2 15,9
	3 22,1	3 22,0	3 18,4	3 18,9
	4 25,1	4 25,0	4 21,4	4 21,9
	5 28,1	5 28,0	5 24,4	5 24,9
Hoisting height (H) m hauteur sous crochet m altura bajo gancho m	*6 31,1	*6 31,0	*6 27,4	*6 27,9
	*7 34,1	*7 34,0	*7 30,4	*7 30,9
	*8 37,1	*8 37,0	*8 33,4	*8 33,9









* Lower guide section after erection/Baissez la cage télescopique après le montage/Bajar torre de montaje.

LIEBHERR

RADIUS, CAPACITY - PORTEE, CHARGE - CARGAS, ALCANCES



SPECIFICATIONS - SPECIFICATIONS - ESPECIFICACIONES

Mechanisms Mécanismes Mecanismos		Falls Brins Nº Ramales	m / min.	kg	kW	 (Layers) (Conches) (capas)	
HOISTING LEVAGE ELEVACION			8 28 56	2.000 2.000 1.000	11	47 m (2) ● 110 m (7 LS)	
		● 	4 14 28	4.000 4.000 2.000	11	55 m (7 LS)	
				0,80 r.p.m.		4,5	
				35		1,5	
● 14 / 56				1,25 / 3			
20				3			

• OPTIONAL
OPTIONNEL
OPCIONAL

DEAD WEIGHT POIDS DE CONSTRUCTION PESO DE CONSTRUCCION	CENTRAL BALLAST LEST DE BASE LASTRE DE BASE	CONTREPOIDS CONTRE-FLECHE CONTRAPESO CONTRAPLUMA COUNTERWEIGHT BALLAST	MAX CORNER PRESSURE REACTION MAX PAR ANGLE REACCION MAX. POR ESQUINA
20.600 kg	40.600 kg	8.600 kg	486 kN

TENSION 380 V - 50 Hz	• OPTIONAL-OPTIONNEL-OPCIONAL	OTHER SPECIFICATIONS ON REQUEST AUTRES SOLUTIONS NOUS CONSULTER OTRAS SOLUCIONES CONSULTAR
TOTAL MOTOR OUTPUT PUISSANCE TOTALE INSTALLEE POTENCIAL TOTAL INSTALADA	20 kW	

LIEBHERR INDUSTRIAS METALICAS, S.A.

Avda. Guipúzcoa, s/n.
Apartado 4096
E-31013 PAMPLONA - ESPAÑA
Teléfono (948) 12 97 99
Telefax (948) 12 73 56

FERNANDO SACEDA, S.A.
Clariano, 2-bajo. 46021 Valencia
Tel: 963 691 643 - 963 699 348
**GRUAS-TORRE
LIEBHERR**

FEM (SECTION 1 - GROUP A3)
SUBJECT TO MODIFICATION - MODIFICATIONS RESERVES - MODIFICACIONES RESERVADAS