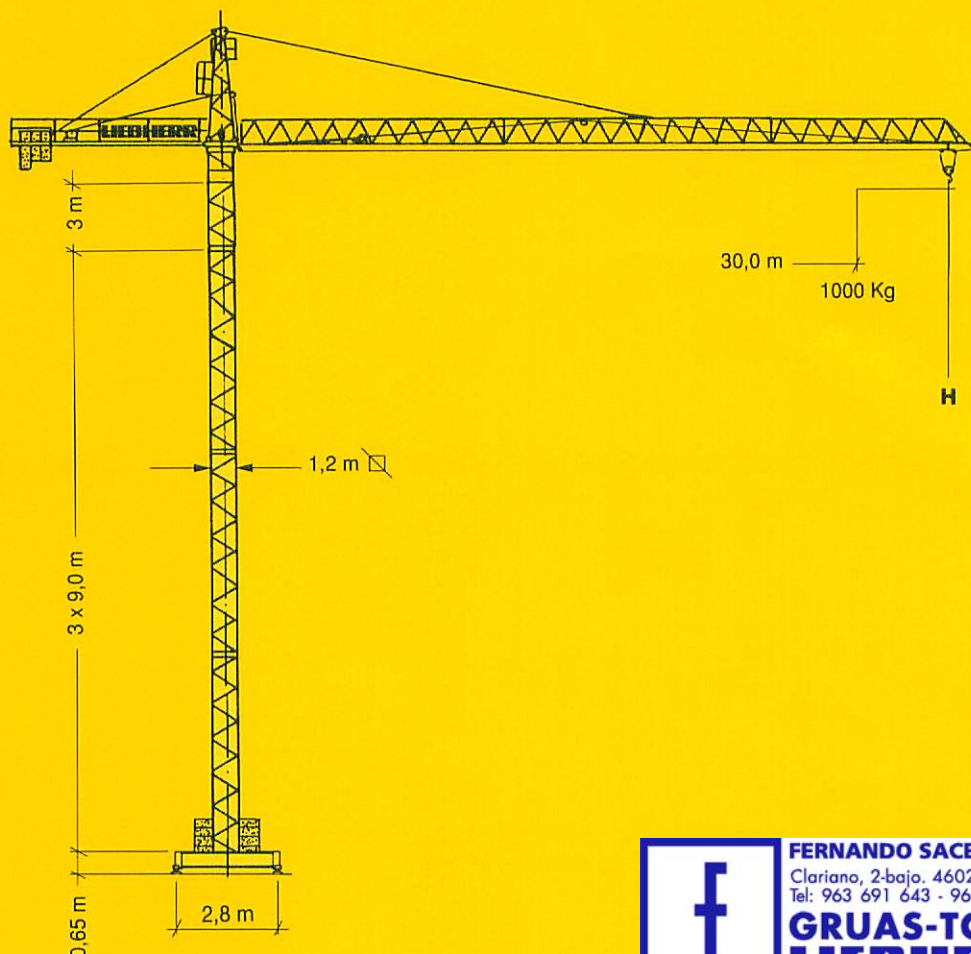


Grúa torre
Tower Crane
Grue à tour


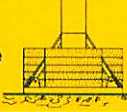


30 NC



FERNANDO SACEDA, S.A.
Clariano, 2-bajo. 46021 Valencia
Tel: 963 691 643 - 963 699 348

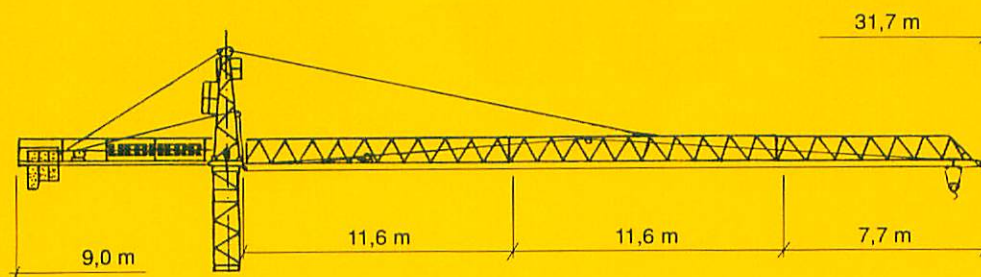
GRUAS-TORRE
LIEBHERR

Altura bajo gancho/Hoisting height/Hauteur sous crochet

versión versions version	I móvil mobile mobile 	II fija stationary on undercarriage stationnaire sur châssis 	III estacionaria stationary stationnaire 	IV base cruciforme cruciform base 																								
Nº de Tramos N number of tower sections N Nº. des éléments de mât N	<table><tr><th>N</th><th>m</th></tr><tr><td>0</td><td>13,1</td></tr><tr><td>0</td><td>22,1</td></tr></table>	N	m	0	13,1	0	22,1	<table><tr><th>N</th><th>m</th></tr><tr><td>0</td><td>13,0</td></tr><tr><td>0</td><td>22,0</td></tr></table>	N	m	0	13,0	0	22,0	<table><tr><th>N</th><th>m</th></tr><tr><td>0</td><td>9,4</td></tr><tr><td>0</td><td>18,4</td></tr></table>	N	m	0	9,4	0	18,4	<table><tr><th>N</th><th>m</th></tr><tr><td>0</td><td>9,9</td></tr><tr><td>0</td><td>18,9</td></tr></table>	N	m	0	9,9	0	18,9
N	m																											
0	13,1																											
0	22,1																											
N	m																											
0	13,0																											
0	22,0																											
N	m																											
0	9,4																											
0	18,4																											
N	m																											
0	9,9																											
0	18,9																											
Altura bajo Gancho (H) m hoisting height m hauteur sous crochet m	<table><tr><td>0</td><td>31,1</td></tr><tr><td>1</td><td>34,1</td></tr></table>	0	31,1	1	34,1	<table><tr><td>0</td><td>31,0</td></tr><tr><td>1</td><td>34,0</td></tr></table>	0	31,0	1	34,0	<table><tr><td>0</td><td>27,4</td></tr><tr><td>1</td><td>30,4</td></tr></table>	0	27,4	1	30,4	<table><tr><td>0</td><td>27,9</td></tr><tr><td>1</td><td>30,9</td></tr></table>	0	27,9	1	30,9								
0	31,1																											
1	34,1																											
0	31,0																											
1	34,0																											
0	27,4																											
1	30,4																											
0	27,9																											
1	30,9																											

LIEBHERR

Cargas, Alcances - Radius, Capacity - Portée, Charge



30,0 m	2 - 21,3	22,0	23,0	24,0	25,0	26,0	27,0	28,0	29,0	30,0	m
	1,50	1,44	1,37	1,30	1,24	1,18	1,13	1,08	1,04	1,00	t

Especificaciones - Specifications - Specifications

Mecanismos Mechanisms Mécanismes	Nº Rames Falls Brins	m / min.	Kg.	CV
 ELEVACION HOISTING LEVAGE		20,0 40,0	1.500 750	7,5
		22,5 45,0	2.000 1.000	12
		6,0 22,5 45,0	2.000 2.000 1.000	12
 GIRO SLEWING ORIENTATION		0,80 r.p.m.		4
 CARRO TROLLEYING CHARIOT		35		2

Peso de construcción Dead weight Poids de construction 12.100 Kg.	Lastre de base Central ballast Lest de base 43.400 Kg.	Contrapeso contrapluma Counterweight ballast Contrepoids contre-fleche 4.600 Kg.	Reacciones Reactions Reactions 452 kN
 Tensión 380 V - 50 Hz Potencial total instalada Total motor output Puissance totale installée 13,5 CV	OTRAS SOLUCIONES CONSULTAR OTHER SPECIFICATIONS ON REQUEST AUTRES SOLUTIONS NOUS CONSULTER		

LIEBHERR INDUSTRIAS METALICAS, S.A.

Avda. Guipúzcoa, s/n.
Apartado 4096
E-31013 PAMPLONA - ESPAÑA
Teléfono (948) 12 97 99
Telefax (948) 12 73 56



FERNANDO SACEDA, S.A.
Clariano, 2-bajo. 46021 Valencia
Tel: 963 691 643 - 963 699 348
**GRUAS-TORRE
LIEBHERR**

Conforme a Instrucción Técnica Complementaria MIE-AEM2 - (B.O.E. 7-7-1988)
MODIFICACIONES RESERVADAS - SUBJEC... O MODIFICATION - MODIFICATIONS RESERVES